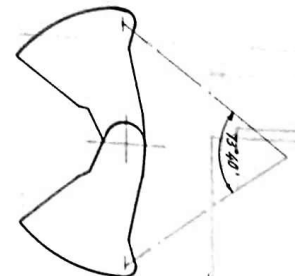
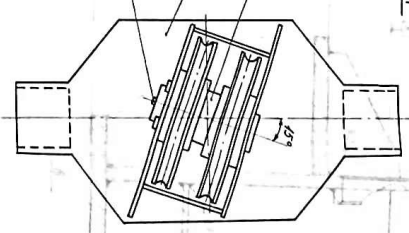


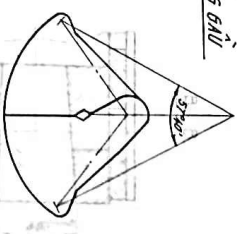
GÓC MŨI TRONG NHẬT CỦA CÁN



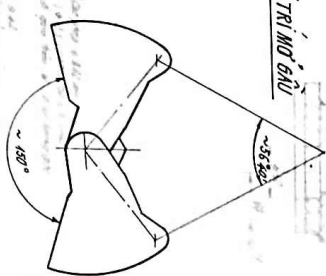
NHÌN THEO  
T.L 1:5



WỊ TRÍ ĐÓNG GÁU



WỊ TRÍ MŨI GŨ



- Dùng thép góc : 2 Tm 3  
- Tổng khối lượng : 2.185 kg  
- Kích thước ngoài 480, cấp cốt d22  
- Tải trọng chịu phép : 5 tấn

10	Hết	01	14	Vết chôn neo	1	100x100x10	Thép 45
11	"	"	13	Thôn gông thép	1	100x100x10	55T
12	"	"	12	Thôn gông thép	1	100x100x10	55T
13	"	"	11	Lưu gông thép	1	100x100x10	55T
14	"	"	10	Súc cốt thép	1	100x100x10	55T
15	"	"	09	Đệm lót thép	1	100x100x10	55T
16	"	"	08	Đệm lót thép	1	100x100x10	55T
17	"	"	07	Đệm lót thép	1	100x100x10	55T
18	"	"	06	Đệm lót thép	1	100x100x10	55T
19	"	"	05	Đệm lót thép	1	100x100x10	55T
20	"	"	04	Đệm lót thép	1	100x100x10	55T
21	"	"	03	Đệm lót thép	1	100x100x10	55T
22	"	"	02	Đệm lót thép	1	100x100x10	55T
23	"	"	01	Đệm lót thép	1	100x100x10	55T
24	"	"	00	Đệm lót thép	1	100x100x10	55T

BẢN VẼ LẬP

GIỮ NGUYÊN 2 Tm 3 CÁN XÂY RÁP

01 - 01 - 00

NHÀ MÁY THIẾT KẾ